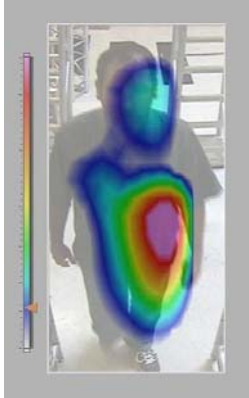




## Security Portal

### Unique Detection System Operates in Many Venues with Heightened Sensitivity with Fewer False Alarms



**Quasar Portal**  
(color pattern indicating  
site of weapon)

Since its founding in 1998, **QUASAR Federal Systems** (QFS) has become a world leader in low-frequency (0.01 Hz to 5 MHz) electromagnetic sensing systems. Among its many accomplishments, QFS recently incorporated its state-of-the-art *passive* magnetic sensing technology into a portal useful for detecting – and localizing – weapons within a second or two on persons entering public buildings such as libraries, schools and post offices, in addition to privately owned buildings. QFS’ screening system also scans crowds attending public forums such as sports stadiums and theaters, in addition to those entering theme parks and similar environments. Moreover, the QFS portal is ideal for screening containers carried into buildings, and monitoring people walking from one part of a facility to another.

### TECHNOLOGY

Most metal detecting systems in use today rely on transmitters located in the frame of the detector *applying* a magnetic field to induce electric currents in metallic objects. Such metal detectors then measure the perturbation of the imposed magnetic field caused by the presence of metallic objects. Such systems take advantage of their control of the applied field to generate a signal sufficient to discriminate the measured signals from environmental “noise” and detect the metal. Such scanning systems interact with heart pacemakers and metal plates in people, however, so all applied screening systems require that those searched must give their consent.

On the other hand, QFS’ *passive* magnetic-based screening systems do not require transmitters to induce electric currents. Rather they measure changes in the Earth’s magnetic field, isolating environmental interferences without transmitting pulses of magnetic energy. Nevertheless, QFS’ screening system achieves markedly increased accuracy and sensitivity within seconds at frequencies well below the environmental magnetic field level – with few false alarms. QFS’ systems do not interact with medical devices, and, as they do not require transmitters, it is possible to imbed the systems in support columns, entrance turnstiles or door frames, thereby becoming inconspicuous to those who are screened, an important feature to many operators.

Additional features of QFS’ screening portals include:

- a video and/or still camera to photograph – and save for a set time – each screened subject;
- colored indicators alert security operators to the exact area on persons where weapons may be present (see illustration above), thereby letting security personnel localize their pat-downs and other secondary security procedures; and
- adjacent sensors to the portal structure can be installed that sense anyone attempting to pass a detectable item around the structure.